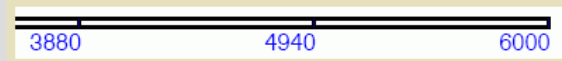




KUEHNCUT for office and workshop

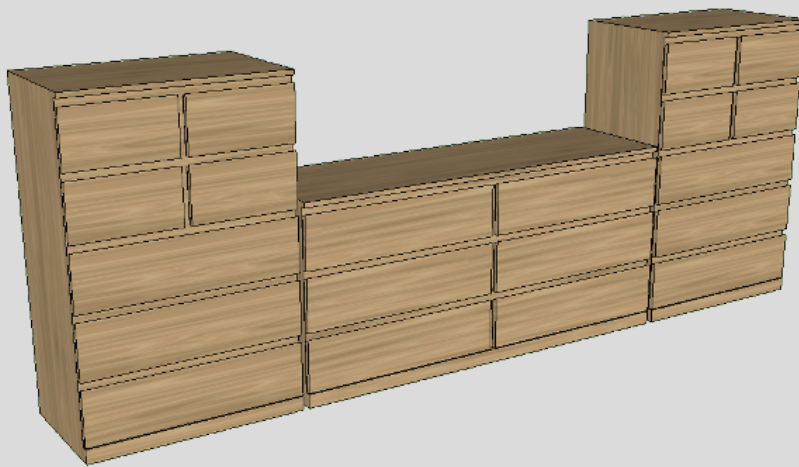
- The reliable optimization
- for bars and panels (1D/2D)
- in the office and factory/workshop
- From CAD drawing to machines
- Easy to use
- Detailed cutting plans
- Label printer
- Optional hardware

cutting bars



cutting

best solution			nested			stripes		
#6	#6	1490				#6	#6	1490
2005	2005	1490				2005	2005	1490
#6	#6	1490				#6	#6	1490
2005	2005	1490				2005	2005	1490



Step 1

- Create CAD Modell
- Export part lists
- Interiorcad®
- Sketchup®
- CSV export
- other...

Step 2

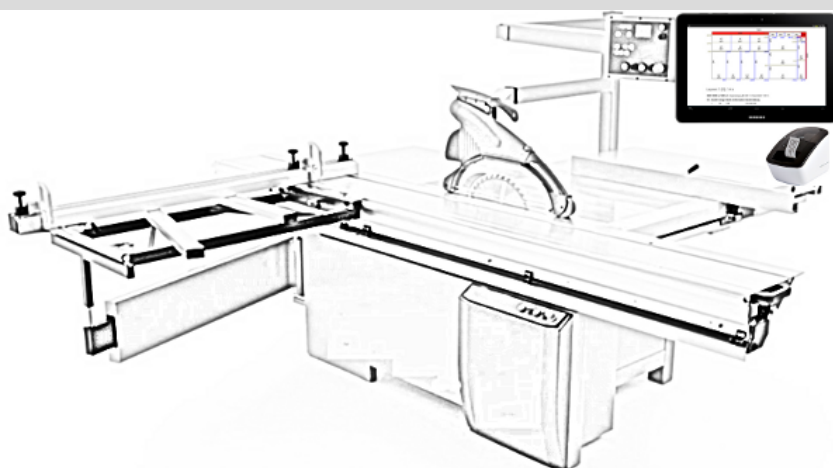
- Import part lists
- Read/manage stock
- Change stock
- Optimize
- Transfer (tablet/panel/server)

KuehnOpt (Beispiel2D-3.opt)

File Projekt Beispiele Einstellungen Hilfe

1. Projekt 2. Platten 3. Teile Etiketten

	Anzahl	Länge	RandX	Breite	RandY	Dicke	Material	drehbar	Kunde
1	150	500		150		5	MDF	J	
2	170	250		120		5	MDF	J	
3	140	600		250		5	MDF	J	
4	100	900		450		5	MDF	J	
5									
6									



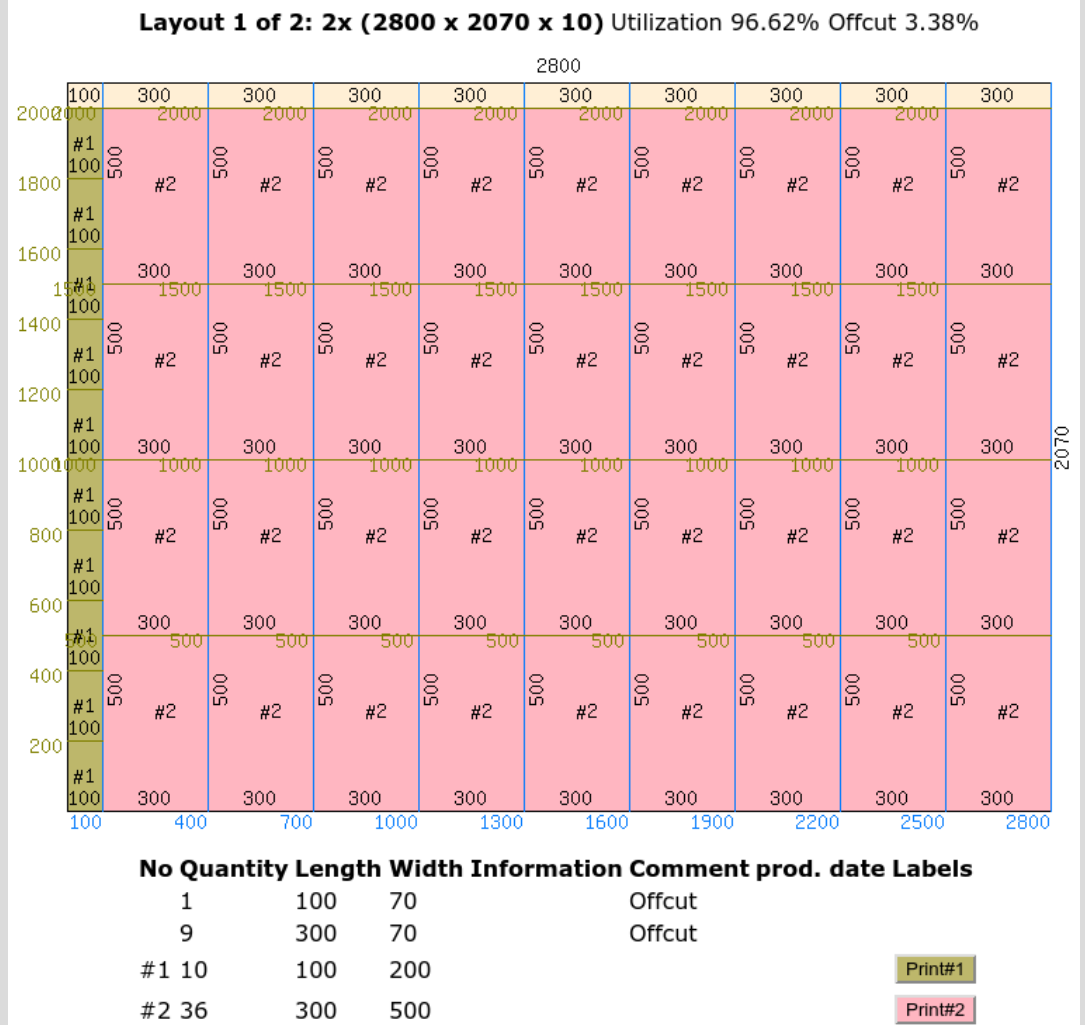
Step 3

- Tablet/panel mounted at saw
- Reload project (optional)
- View cutting plan
- Select label
- Print label

Cutting plan incl. labels

Step 4

- view cut plans
- select layout
- select label



797 x 494.5 x 19	#4	L4/1
mdf	Tuer	Sideboard Flur-
Belag I/A:lack RAL 9010/lack RAL 9010		
Kante vorn: 'grundier-k. 0.5		
Kante hinten: 'grundier-k. 0.5		
Kante links: 'grundier-k. 0.5		
Kante rechts: 'grundier-k. 0.5		

Step 5

- print label
- edge banding
- edge drawing

Contact



Dr.-Ing. Thomas Kühn
KUEHN SOLUTIONS
 Hauptstr.2

31552 Rodenberg
Germany

Phone: ++49 (0) 511 87459916

Email: info@kuehn-solutions.de

Internet: www.kuehn-solutions.de